

2020 Foundation Board of Trustees

Ron Rhodes - President
Connie Kays - Vice-President
Douglas Stuckey - Treasurer
Jeff Elliott - Secretary

Marty Beezley	Crystal Marietta
Susie Boldrini	Frances Mitchelson
Susan Cook	Bill Morin
Dale Coomes	Diana Polston
Ken Cunningham	Mark Schifferdecker
Megan Fry	Betty Scripsick
Linda Grilz	David Shepherd
Paul Grimes	Becky Sloan
Diane James	Steve Ward
Rod Landrum	Lynda Wilkinson
Rob Lessen	

YOUR Community Foundation For Good Forever

The Community Foundation of Southeast Kansas serves the region by encouraging charitable giving benefiting the common good and quality of life. We inspire leadership with programming that is responsive to the interests and needs of those we serve now and in the future.

Whether you are a potential donor, a professional advisor, a nonprofit director, or someone who is simply concerned about the future of Kansas, connecting with your community foundation is the first step toward a better tomorrow for your community.

Community Foundation Affiliates



2020 Board of Trustees

Zach Adams	Danielle Randall
Blaise Bauer	Cherie Schenker
Dan Duling	Nancy Schifferdecker
Lori Johnson	Josh Smith
Jerod Norris	Kim Viets
Mark Peak	Louie Weimer
Jeannie Peterson	Dave Wutke
Michelle Smith-Puckett	



Fort Scott Area
Community Foundation

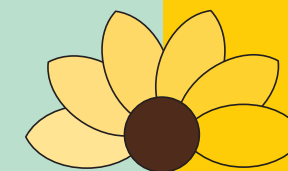
2020 Board of Trustees

Barbara Albright	Beth Nuss*
Connie Banwart	Bob Marshall*
Sheryl Bloomfield	Deb McCoy
Janet Braun	Gregg Motley
Michelle Bruner	Gary Palmer
Steve Buerge	Kirk Sharp
Craig Campbell	Travis Shelton
Carla Farmer	David Shepherd
Charles Gentry	Otie Thomas*
Frank Halsey	Melissa Wise*
Lindsay Madison	Stephanie Witt*

*Concluded Board term 7/1/2020

Kit Parks, Executive Director
Kim Lynch, Office Administrator
Sherri Stephens, Program Coordinator
Joshua McCloud, Donor Services/Community Outreach Coordinator
www.southeastkansas.org

2020 Annual Report



communityfoundation
of SOUTHEAST KANSAS

Community Foundation
of Southeast Kansas
100 South Broadway, Suite 100
P.O. Box 1448
Pittsburg, Kansas 66762
620-231-8897 www.southeastkansas.org



The year in review.....

Statement of Financial Position

Statement of Activities

Dear Friends,

Our world changed as we knew it in 2020! Although the year was full of challenges and struggles to maintain some normalcy in our lives, the pandemic did not alter the work of the Community Foundation, the dedication of our Board of Trustees, nor the generosity of donors who care deeply about our southeast Kansas region. We are fortunate and grateful.

Our 2020 Annual Report highlights our growth and accomplishments by partnering with many individuals and organizations whose common goal is to improve the quality of life in the place we call home.

The Community Foundation of Southeast Kansas and affiliates, the Girard Area Community Foundation and the Fort Scott Area Community Foundation, continue to build charitable resources and award grants which benefit the health and well-being of area citizens.

The following are some of our accomplishments in 2020:

- 91 community grants totaling \$229,538 were awarded during the annual granting cycles from the CFSEK general grant funds, the Rita J. Bicknell Women's Health Fund Giving Circles, the Future Fund Giving Circle, the Get Busy Livin' Foundation and the Elm Acres Foundation
- Our affiliate Foundations granted an additional \$74,073 to 30 organizations in the Fort Scott and Girard area during their general grant cycles
- 17 scholarship funds awarded over \$73,000 in scholarships to 62 students for the 2020 – 2021 school year
- CFSEK Match Day on Giving Tuesday, resulted in \$204,235 for the endowed funds of 25 local organizations
- Total assets of the Foundation increased from \$47.1 million in 2019 to \$50.9 million
- Grants distributed from all Funds with CFSEK in 2020 totaled \$1,910,900

We sincerely thank our Founders, Board of Trustees, Donors, Fund Holders and the many charitable organizations for the support to ensure the best future of our community. Our accomplishments are not possible without **YOU!**

Looking ahead... In 2021 CFSEK will celebrate 20 years! Our commitment and pledge is to partner, invest in our community and be a trusted resource for philanthropy.

Together, we can make it happen!

With Gratitude,
Ron Rhodes
President

Kit Parks
Executive Director

Assets	<u>Dec. 31,2020</u>	<u>Dec. 31,2019</u>
Cash and cash equivalents	\$ 2,738,056	\$ 2,757,974
Fixed income investments	13,405,068	12,459,809
Equity investments	18,713,705	16,621,919
Real Estate	9,508,830	9,508,830
Closely Held Stock	291,081	-
Other brokers and investments	6,319,887	5,863,744
Pledges receivable, net	770	1,070
Prepaid expenses	5,452	4,105
Property and equipment, net	-	-
Total Assets	<u><u>\$50,982,849</u></u>	<u><u>\$47,217,451</u></u>

Liabilities and Net Assets

Liabilities

Accounts/Grants payable	\$ 39,447	\$ 35,353
Payroll Protection Liability	29,300	-
Funds held for agencies	6,929,445	6,163,871

Total Liabilities

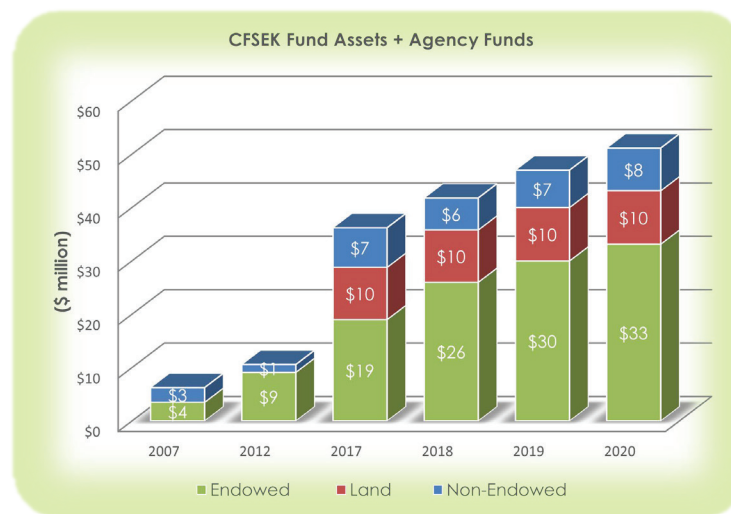
	<u>\$ 6,998,192</u>	<u>\$ 6,199,224</u>
--	---------------------	---------------------

Net Assets

	<u>\$43,984,657</u>	<u>\$41,018,227</u>
--	---------------------	---------------------

Total Liabilities and Net Assets

	<u><u>\$50,982,849</u></u>	<u><u>\$47,217,451</u></u>
--	----------------------------	----------------------------



Revenues, Gains and Support	<u>2020</u>	<u>2019</u>
Gifts and pledges	\$ 1,494,287	\$ 1,400,172
Income from services	310,922	294,930
Rental income	94,370	94,370
Investment return	3,686,801	4,302,374
Other	4,548	93,710
Total Revenues, Gains & Support	<u><u>\$ 5,590,928</u></u>	<u><u>\$ 6,185,556</u></u>

Expenses

Grants and program services	\$ 1,814,887	\$ 1,392,304
Fees paid by agencies	257,109	243,612
Operating expenses	552,502	499,650

Total Expenses

	<u>\$ 2,624,498</u>	<u>\$ 2,135,566</u>
--	---------------------	---------------------

Change in Net Assets

Net Assets, Beginning of Year	<u>41,018,227</u>	<u>36,968,237</u>
-------------------------------	-------------------	-------------------

Net Assets, End of Year

	<u><u>\$43,984,657</u></u>	<u><u>\$41,018,227</u></u>
--	----------------------------	----------------------------

GRANTS AWARDED SINCE 2001 - \$16.5 MILLION

Fund Category (\$000)	No. of Funds	Fund Bal at 12/31/20	Granted in CY20
Arts, Culture and Humanities	10	\$ 855	\$ 6
Education	31	14,847	305
Environment and Animals	4	1,928	80
Health & Wellness	16	2,190	111
Public, Societal Benefit	72	23,177	1,014
Religion	3	403	16
Unrestricted	33	7,514	379
Total Net Assets + Agency Funds	169	\$ 50,914	\$ 1,911

Fund Type (\$000)	No. of Funds	Fund Bal at 12/31/20	Granted in CY20
Administrative	2	\$ 1,477	\$ 35
Donor-Advised	34	8,028	486
Designated	28	13,516	537
Field of Interest	40	7,613	544
Organization	40	6,441	180
Scholarship	16	556	51
Unrestricted	8	3,504	78
Supporting Organization	1	9,779	-
Total Net Assets + Agency Funds	169	\$ 50,914	\$ 1,911