

2016 Foundation Board of Trustees

Cindy Bedene
Marty Beezley
Todd Coleman
Sharon Dean
Vicki Dennett
Gordon Elliott
Joe Hart
Jim Hoskins
Connie Kays
Ron Marrone
Dave Martin
Kevin Mitchelson

Lynette Olson
Wilda Pentola
Pam Phalen
Diana Polston
Ron Rhodes
Judy Spigarelli
Douglas Stuckey
Montie Taylor
Chris Ward
Wendell Wilkinson
Talaat Yaghmour

The Community Foundation's Goals

The Community Foundation of Southeast Kansas inspires the generosity to meet the needs of the community we serve.

- Maximize the **long-term impact** of charitable donations
- Provide donors with **significant financial advantages**, tax benefits, convenience, professional management, versatility, and recognition or anonymity
- **Tailor grants** to donors' interests
- **Provide options** for meaningful charitable giving

Community Foundation Affiliates Girard Area Community Foundation 2016 Board of Trustees

Blaise Bauer
Dale Coomes
Jerrod Norris
Janet O'Brien
Wilda Pentola
Jeannie Peterson
Michelle Smith-Puckett

Tony Stonerock
Jim Vinze
Vicki Vinze
Marilyn VonSoosten
Penne Warner
Craig Wilbert

Fort Scott Area Community Foundation 2016 Board of Trustees

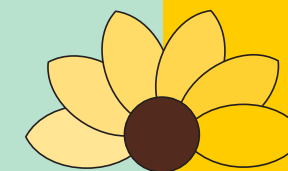
Barbara Albright
Pat Alexander
Tim Bloomfield
Michael Bryant
Steve Buerge
Larry Davenport
Mike Emerson
Carla Farmer
Richard Goldston
Frank Halsey
Dick Hedges

Blake Hudson
Janet Ida
Patty LaRoche
Lindsay Madison
Bob Marshall
Dave Martin
Randy Nichols
Beth Nuss
Otie Thomas
Melissa Wise
Stephanie Witt

Kit Parks, Executive Director
Sherri Stephens, Program Coordinator
Kim Lynch, Office Administrator

www.southeastkansas.org

2016 Annual Report



communityfoundation
of SOUTHEAST KANSAS

Community Foundation
of Southeast Kansas

100 South Broadway, Suite 100

P.O. Box 1448

Pittsburg, Kansas 66762

620-231-8897 www.southeastkansas.org



The year in review.....

Dear Friends,

As we reflect on what was accomplished in 2016, this annual report reminds us of what Southeast Kansans are so great at doing ... being a **force of good!**

The Community Foundation of Southeast Kansas is a partner, resource and steward of philanthropy in our region, with our donors being the true **heroes!** As a result of their generosity, we are able to manage resources, award grants, and distribute funds to benefit communities in many ways. Donor advised, Organization and Foundation funds awarded grants in excess of \$9.8 million since the establishment of the Community Foundation in 2001.

In 2016, the Community Foundation received \$2.1 million in gifts and distributed over \$1.0 million in grants to charities benefitting health and human services, children and youth activities, educational purposes and civic engagement. Together with our affiliate Community Foundations of Girard and Fort Scott, growth continued and in 2016 our balance rose 11%, surpassing \$19.6 million in assets.

A new endeavor in 2016 was our first **Match Day** on National Giving Tuesday. It was successful beyond our expectations. Participation of individuals in this event proved our community is filled with generous people who care about others and the well-being of their community. Over \$73,000 was raised for endowed funds of 20 organizations and schools that provide meaningful purpose in our community. The Community Foundation also granted an additional \$20,000 to assist in the effort to increase permanent funds creating long-term impact for generations to come. The Foundation Board thanks all who participated and gave so generously!

In 2017, we look forward to our continued work with donors, organizations and programs that make positive changes in our communities. The continued benefit to our communities is endless. **Embrace generosity and join us in being a force of good to make a difference locally!**

Sincerely,

Douglas Stuckey
2016 Board President

Kit Parks
Executive Director

Community Foundation of Southeast Kansas Statement of Financial Position

	Dec. 31, 2016	Dec. 31, 2015
Assets		
Cash and cash equivalents	\$945,947	\$1,108,302
Investments		
Fixed income investments	\$6,405,909	\$5,503,356
Equity investments	9,795,160	8,479,388
Other brokers and investments	2,385,940	2,253,112
Pledges receivable, net	179,863	331,156
Prepaid expenses	1,722	-
Property and equipment, net of accumulated depreciation	1,111	2,459
Total assets	\$19,715,652	\$17,677,773
Liabilities and Net Assets		
Liabilities		
Accounts payable	\$30,207	\$1,744
Total liabilities	\$30,207	\$1,744
Net Assets		
Unrestricted	\$18,078,881	\$16,095,954
Temporarily restricted	\$1,606,564	\$1,580,075
Total net assets	\$19,685,445	\$17,676,029
Total liabilities and net assets	\$19,715,652	\$17,677,773

Community Foundation of Southeast Kansas Statement of Activities

	2016	2015
Revenues, Gains and Other Support		
Gifts and pledges	\$2,132,426	\$4,450,752
Income from services	162,846	145,144
Investment return (loss)	1,295,538	(88,923)
Other	8,842	22,795
Total revenues, gains and other support	\$3,599,652	\$4,529,768
Expenses		
Grants and other program services	\$1,046,823	\$1,294,770
Administrative expenses	543,160	425,627
Development expenses	253	202
Total expenses	\$1,590,236	\$1,720,599
Change in Net Assets	\$2,009,416	\$2,809,169
Net Assets, Beginning of Year	17,676,029	14,866,860
Net Assets, End of Year	\$19,685,445	\$17,676,029

Grants awarded since inception \$9.8 million

