

# 2019 Foundation Board of Trustees

Ron Rhodes - President  
Connie Kays - Vice-President  
Vicki Dennett - Treasurer  
Jeff Elliott - Secretary

Marty Beezley  
Susie Boldrini  
Susan Cook  
Dale Coomes  
Megan Fry  
Linda Grilz  
Paul Grimes  
Diane James  
Rob Lessen  
Crystal Marietta

Kevin Mitchelson  
Diana Polston  
Mark Schifferdecker  
Betty Scripsick  
David Shepherd  
Becky Sloan  
Montie Taylor  
Steve Ward  
Lynda Wilkinson

## Community Foundation Affiliates



### 2019 Board of Trustees

Zach Adams  
Blaise Bauer  
Dale Coomes  
Dan Duling  
Lori Johnson  
Jerod Norris  
Janet O'Brien  
Jeannie Peterson  
Wilda Pentola

Michelle Smith-Puckett  
Danielle Randall  
Nancy Schifferdecker  
Josh Smith  
Tony Stonerock  
Kim Viets  
Jim Vinze  
Vicki Vinze  
Dave Wutke



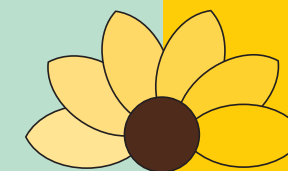
Fort Scott Area  
Community Foundation

### 2019 Board of Trustees

Barbara Albright  
Sheryl Bloomfield  
Janet Braun  
Michelle Bruner  
Steve Buerge  
Craig Campbell  
Mike Emerson  
Carla Farmer  
Charles Gentry  
Frank Halsey  
Dick Hedges

Blake Hudson  
Patty LaRoche  
Bob Marshall  
Gregg Motley  
Beth Nuss  
Gary Palmer  
Travis Shelton  
Otie Thomas  
Melissa Wise  
Stephanie Witt

# 2019 Annual Report



communityfoundation  
of SOUTHEAST KANSAS

## YOUR Community Foundation For Good ..... Forever

*The Community Foundation of Southeast Kansas serves the region by encouraging charitable giving benefiting the common good and quality of life. We inspire leadership with programming that is responsive to the interests and needs of those we serve now and in the future.*

*Whether you are a potential donor, a professional advisor, a nonprofit director, or someone who is simply concerned about the future of Kansas, connecting with your community foundation is the first step toward a better tomorrow for your community.*

Community Foundation  
of Southeast Kansas  
100 South Broadway, Suite 100  
P.O. Box 1448  
Pittsburg, Kansas 66762  
620-231-8897    [www.southeastkansas.org](http://www.southeastkansas.org)

Kit Parks, Executive Director  
Kim Lynch, Office Administrator  
Sherri Stephens, Program Coordinator  
Joshua McCloud, Donor Services/Community Outreach Coordinator  
[www.southeastkansas.org](http://www.southeastkansas.org)



# The year in review.....

## Statement of Financial Position

## Statement of Activities

Dear Friends,

It is our pleasure to share with you our 2019 Annual Report, which highlights our growth and accomplishments by partnering with many individuals and organizations whose common goal is to improve the quality of life in the southeast Kansas region.

The Community Foundation of Southeast Kansas and affiliates, the Girard Area Community Foundation and the Fort Scott Area Community Foundation, are committed to building charitable resources and awarding grants which benefit non-profit organizations, our citizens and the community as a whole.

The following are some of our accomplishments in 2019:

- 94 community grants totaling \$212,458 were awarded during the annual granting cycles from the Community Foundation general grant funds, the Rita J. Bicknell Women's Health Fund Giving Circles, the Future Fund Giving Circle, the Get Busy Livin' Foundation and the Elm Acres Foundation
- Our affiliate Foundations granted an additional \$66,317 to 36 organizations in the Fort Scott and Girard area during their general grant cycles
- 15 scholarship funds awarded over \$57,000 in scholarships for the 2019-20 school year
- CFSEK Match Day on Giving Tuesday, resulted in over \$144,000 for endowed funds of 24 local organizations
- Total assets of the Foundation increased from \$42 million in 2018 to \$47 million in 2019
- Grants distributed from all Funds with CFSEK in 2019 totaled \$1,763,828

We are proud of our accomplishments and hope the "good work" happening in southeast Kansas inspires you to be a partner helping those in need and improving the well-being of your community. CFSEK is dedicated to helping donors fulfill their charitable wishes. Whether we assist you in adding a gift to a favorite organization's endowment, start a giving fund for your family, or plan your personal legacy gift, we are here to serve you.

None of the accomplishments are possible without the donors, fund holders, legacy society members and the CFSEK Board of Trustees. We sincerely thank all who contribute to our work and allow us to be a partner, resource and steward for philanthropy in our community!

With Gratitude,

Ron Rhodes  
President

Kit Parks  
Executive Director

<b>Assets</b>	Dec. 31,2019	Dec. 31,2018
Cash and cash equivalents	\$ 2,757,974	\$ 3,340,939
<b>Investments</b>		
Fixed income	12,459,809	11,228,167
Equity	16,621,919	13,054,869
Real Estate	9,508,830	9,508,830
Other brokers & investments	5,863,744	5,286,139
Pledges receivable, net	1,070	2,139
Prepaid expenses	4,105	4,388
Property & equipment, net	-	-
<b>Total Assets</b>	<b><u>\$47,217,451</u></b>	<b><u>\$42,425,471</u></b>
<b>Liabilities and Net Assets</b>		
<b>Liabilities</b>		
Accounts/Grants payable	\$ 35,353	\$ 65,970
Funds held for agencies	<u>6,163,871</u>	<u>5,391,264</u>
<b>Total Liabilities</b>	<b>\$ 6,199,224</b>	<b>\$ 5,457,234</b>
<b>Net Assets</b>	<b><u>\$41,018,227</u></b>	<b><u>\$36,968,237</u></b>
<b>Total Liabilities and Net Assets</b>	<b><u>\$47,217,451</u></b>	<b><u>\$42,425,471</u></b>

<b>Revenues, Gains and Support</b>	2019	2018
Gifts and pledges	\$ 1,400,172	\$ 9,065,926
Income from services	294,930	263,160
Rental income	94,370	94,370
Investment return	4,302,374	(866,955)
Other	<u>93,710</u>	<u>141,620</u>
<b>Total Revenues, Gains &amp; Support</b>	<b><u>\$ 6,185,556</u></b>	<b><u>\$8,698,121</u></b>
<b>Expenses</b>		
Grants and program services	\$ 1,392,304	\$ 1,618,621
Fees paid by agencies	243,612	212,425
Operating expenses	<u>499,650</u>	<u>463,407</u>
<b>Total Expenses</b>	<b><u>\$ 2,135,566</u></b>	<b><u>\$ 2,294,453</u></b>
<b>Change in Net Assets</b>	<b>\$ 4,049,990</b>	<b>\$6,403,668</b>
Net Assets, Beginning of Year	<u>36,968,237</u>	<u>\$30,564,569</u>
<b>Net Assets, End of Year</b>	<b><u>\$41,018,227</u></b>	<b><u>\$36,968,237</u></b>

### GRANTS AWARDED SINCE INCEPTION - \$14.6 MILLION

<b>Fund Category (\$000)</b>	<b>No. of Funds</b>	<b>Fund Bal at 12/31/19</b>	<b>Granted in CY19</b>
Arts, Culture and Humanities	10	\$ 845	\$ 95
Education	28	14,452	288
Environment and Animals	4	1,841	77
Health & Wellness	17	1,992	104
Public, Societal Benefit	75	21,138	929
Religion	3	392	17
Unrestricted	31	6,522	254
<b>Total Net Assets + Agency Funds</b>	<b>168</b>	<b>\$ 47,182</b>	<b>\$ 1,764</b>
<b>Fund Type (\$000)</b>	<b>No. of Funds</b>	<b>Fund Bal at 12/31/19</b>	<b>Granted in CY19</b>
Administrative	2	\$ 1,307	\$ 27
Donor-Advised	32	7,147	334
Designated	32	12,885	450
Field of Interest	39	6,265	417
Organization	40	6,164	372
Scholarship	14	495	39
Unrestricted	8	3,132	125
Supporting Organization	1	9,787	-
<b>Total Net Assets + Agency Funds</b>	<b>168</b>	<b>\$ 47,182</b>	<b>\$ 1,764</b>

